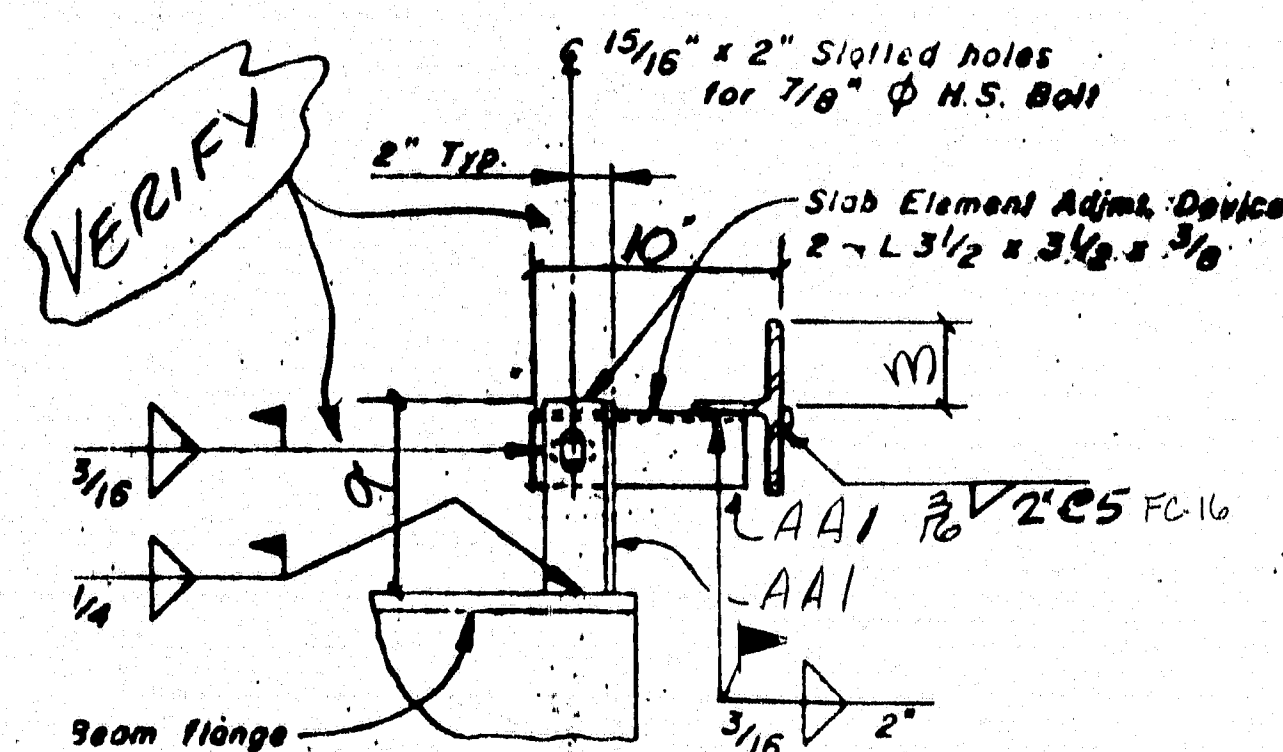


BILL OF MATERIAL				
QTY	MARK	SHAPE	LENGTH	REMARKS
1	EJ1 <sup>R</sup>	WT4x24	22'-1 3/8"	
1	EJ1 <sup>L</sup>	Do	22'-1 3/8"	
18	BA1	BAR 1x3	1	0
44	AS1	1/2" STUDS	1	0
16	AA1	3/4"x3/4"x3	9	
8	FIELD	3 BOLTS	24	W/NE 2 WASH
2	RA1	3/4" ROD	22'-1 3/8"	
18	BA1	BAR 1x3	1	0
1	FIELD	COMP SEAL	50	0 DS BROWN #H-2502 W/ADHESIVE

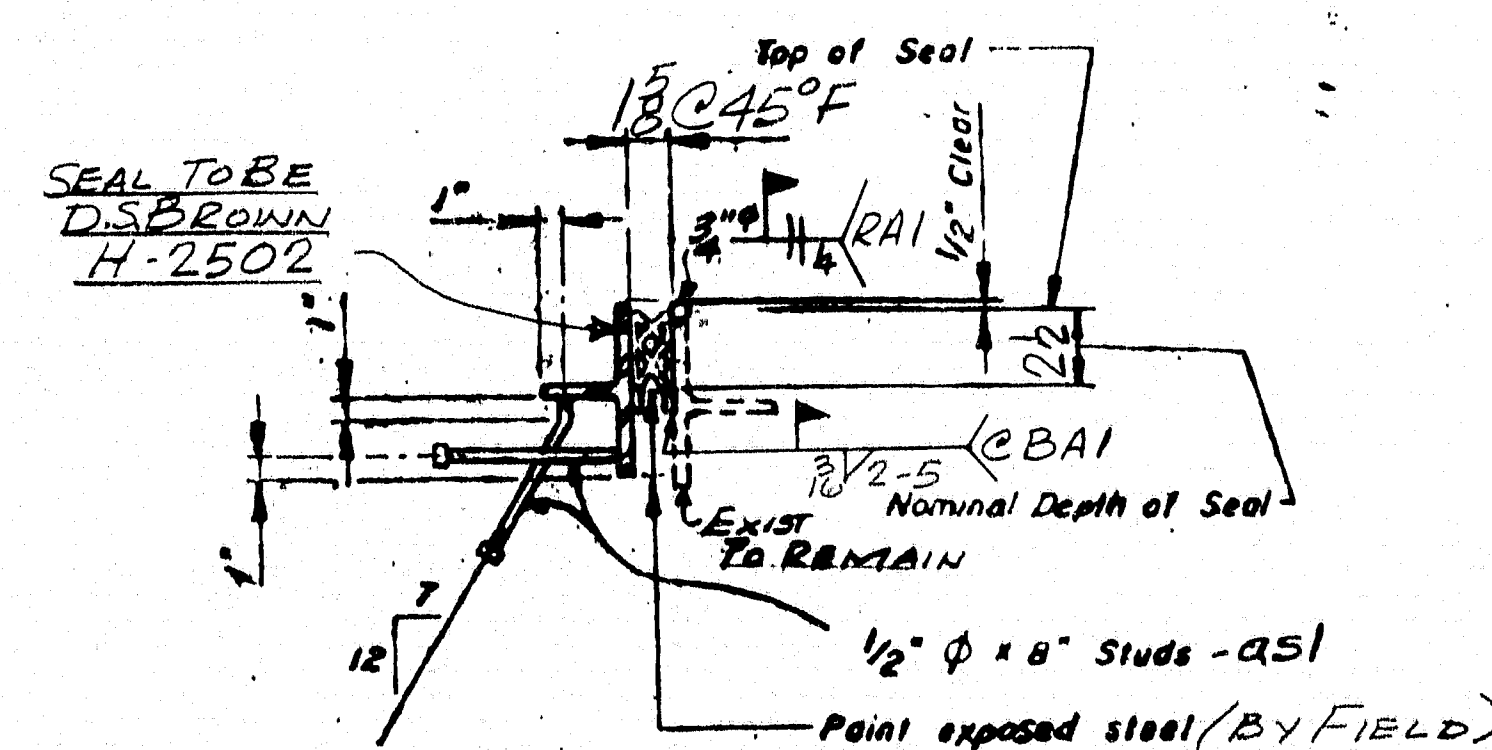
PIN No. 4158.00  
 PROJ No. IR-IM-95-9(130)  
 BRIDGE No. 6091  
 PAY ITEM No. 520-241

105-300

MATERIAL: ASTM A36 & AS NOTED  
 BOLTS: ASTM A325  
 HOLES: AS NOTED  
 ELECTRODES: SEE WELDING PROC.  
 SURFACE PREP: SSPC-SP6  
 PRIMER: NONE



ADJUSTMENT DEVICES



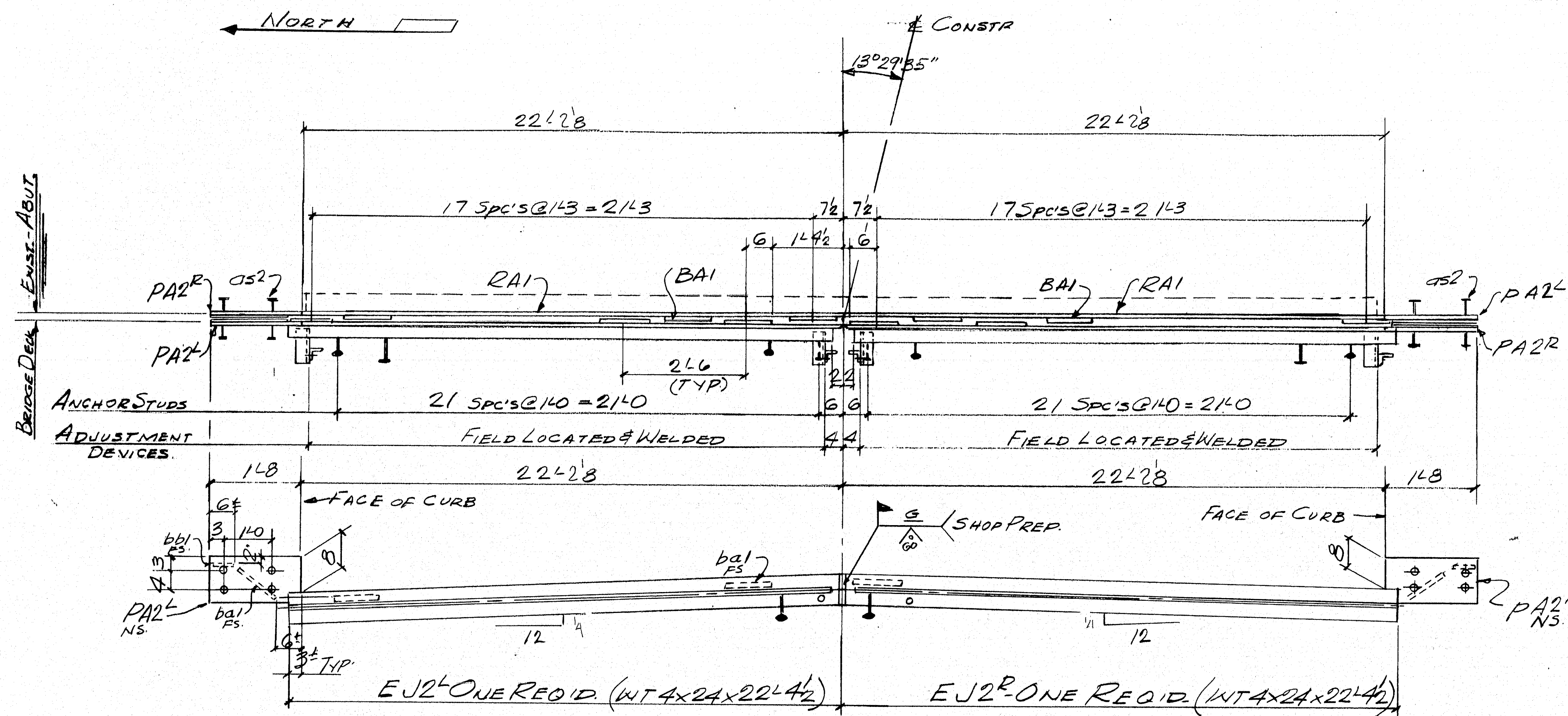
TYPICAL SECTION

STATE OF MAINE  
 DEPARTMENT OF TRANSPORTATION  
 CONSTRUCTION DIVISION  
☒ NO EXCEPTIONS TAKEN ☐ EXCEPTIONS NOTED  
 JUL 13 1992  
☐ RETURNED FOR CORRECTIONS ☐ REJECTED  
 DOCUMENT REVIEWED IN ACCORDANCE WITH SECTION 305  
 IF STANDARD SPECIFICATIONS

REV.	NO.	DATE	DESCRIPTION
1	6/23	PER MAINE D.O.T.	
HOLES AS NOTED			
PAINT SEE NOTE ABOVE			

DRAWING COVERS: ARMORED JOINT MOD. - TYPE I	
ABUTMENT No. 1	
DATE SUB.	PROJECT
	195 SOUTH BOUND
	OVER LINE RD.
	LOCATION
	SMYRNA & LUDLOW, ME
	ARCHITECT
	ENGINEER
	STATE OF MAINE D.O.T.
DATE APP.	CUSTOMER
	C.P.M. CONSTRUCTORS
MERRIMACK SHEET METAL	
119 HALL ST.	
CONCORD N.H.	
03301	
Tel. (603) 224-7766	
Fax (603) 224-7925	
DRAWN BY:	CHKD. BY:
J.P.F.	
JOB NO.	DWG. NO.
5760	1





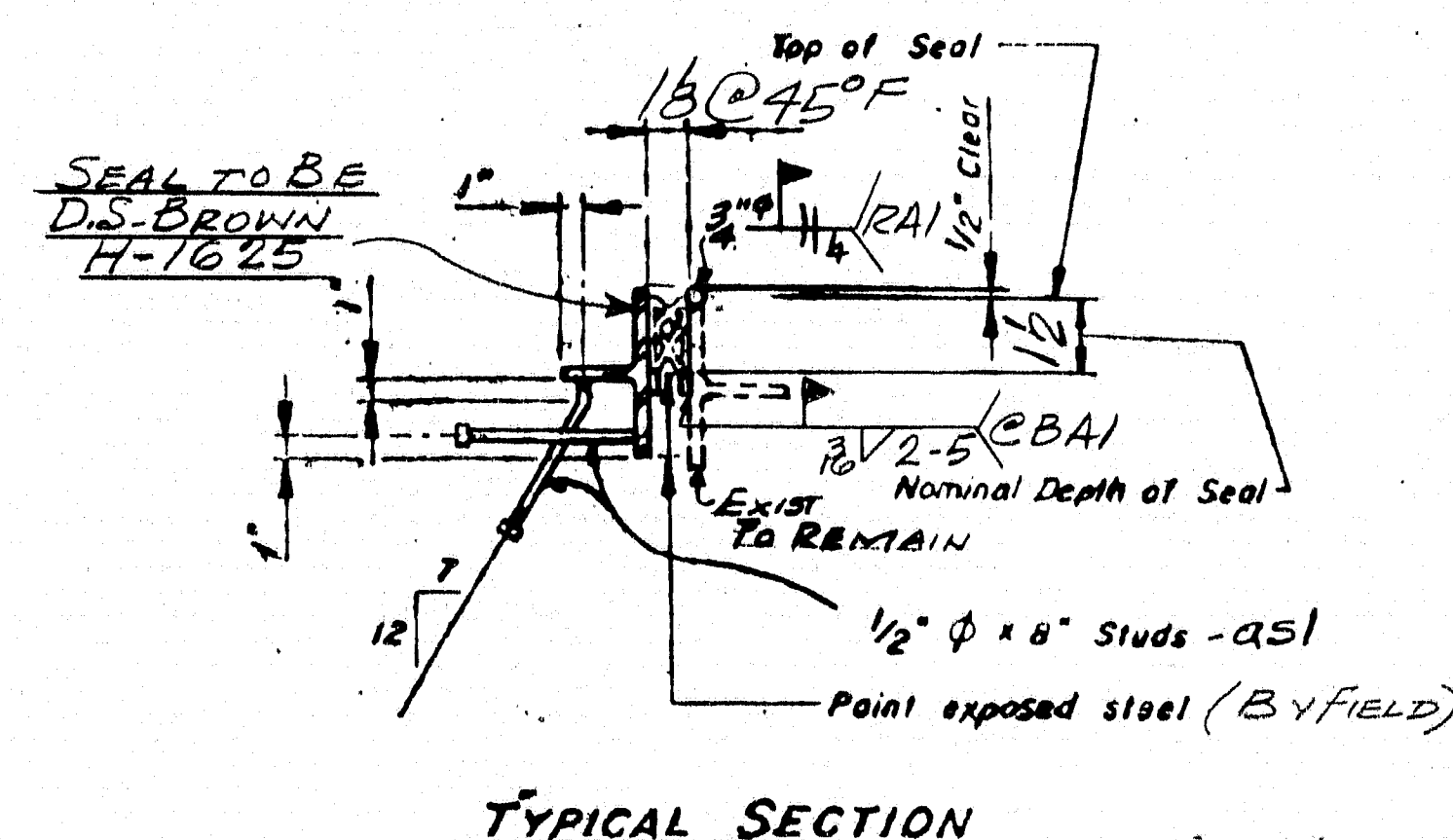
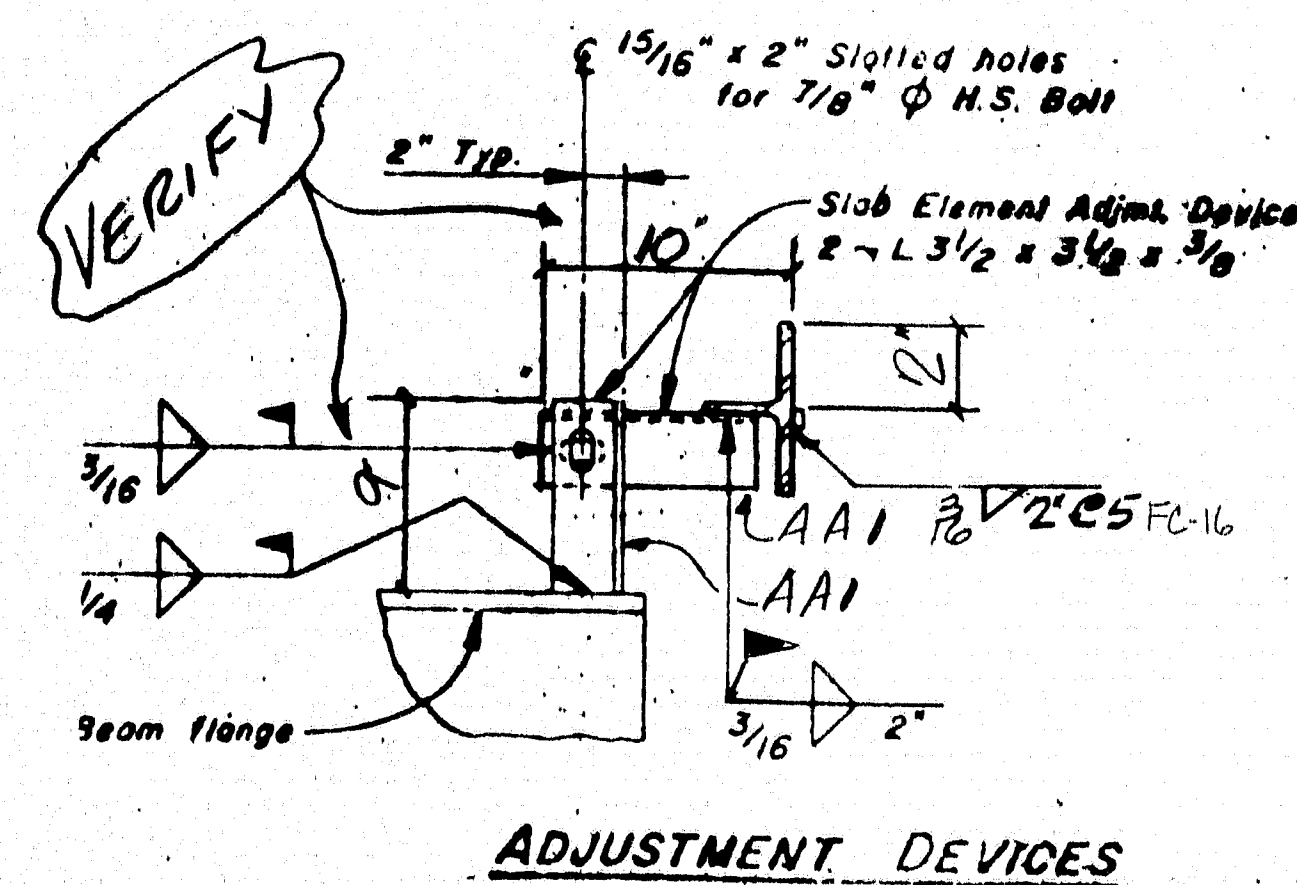
BILL OF MATERIAL				
QTY	MARK	SHAPE	LENGTH	REMARKS
1	EJ2 <sup>L</sup>	WT 4x24	22'4 1/2	
1	EJ2 <sup>R</sup>	DO	22'4 1/2	
18	PA1	BAR 1x3/8	1	0
44	OS1	2" ANG. STUDS	1	8
16	AA1	43/8x3/8x5/8	9	
8	FIELD	7/8 BOLTS	24	N/A 2 WASH.
2	PA2 <sup>L</sup>	3x104	1	8
2	PA2 <sup>R</sup>	DO	1	8
4	BA1	BAR 1x3/8	1	0
4	BB1	DO	1	5
16	OS2	2" ANG. STUDS	4	
2	RA1	3/4" ROD	22'28"	
18	BA1	BAR 1x3/8	1	0
1	FIELD	COMP. SEAL	50	0 DSBROWN H-1625 W/ADHESIVE

PIN No. 4158.00

PROJ. No. IR-IM-95-9(130)

BRIDGE No. 6091

PAY ITEM No. 520-241



105-301

MATERIAL: ASTM. A36 & A3 NOTED  
 BOLTS: ASTM. A325  
 HOLES: A3 NOTED.  
 ELECTRODES: SEE WELDING PROC.  
 SURFACE PREP: SSPC-SP6  
 PRIMER: NONE

STATE OF MAINE  
 DEPARTMENT OF TRANSPORTATION  
 CONSTRUCTION DIVISION

☒ NO EXCEPTIONS TAKEN ☐ EXCEPTIONS NOTED

JUL 13 1992

☐ RETURNED FOR CORRECTIONS ☐ REJECTED

DOCUMENT REVIEWED IN ACCORDANCE WITH SECTION 305  
 OF STANDARD SPECIFICATIONS

DRAWING COVERS: ARMOR REPAIR MOD. - TYPE I  
 ABUTMENT NO. 2

DATE SUB. PROJECT LOCATION ARCHITECT ENGINEER CUSTOMER

195 SOUTHBOUND  
 OVER LINERD.  
 SMYRNA & LUDLOW, ME.  
 STATE OF MAINE D.O.T.  
 C.P.M. CONSTRUCTORS

REV. NO. DATE DESCRIPTION

1 6/25 PER MAINE D.O.T.

HOLES A3 NOTED

PAINT SEE NOTE ABOVE

MERRIMACK  
 SHEET METAL  
 119 HALL ST.  
 CONCORD N.H.  
 03301  
 Tel. (603) 224-7766  
 Fax (603) 224-7925

DRAWN BY: J.R.F.  
 CKD BY:  
 JOB NO. 5760  
 DWG. NO. 2